

# US 21/SC 802 (Lady's Island Drive) Widening

## Location:

SC 802 (Ribaut Road) to US 21 (Sea Island Parkway)

## Description:

2.8 Miles, 4-Lane Divided Roadway with New Bridge, Sidewalks, Pathways and Bike Lanes

## Design Consultant:

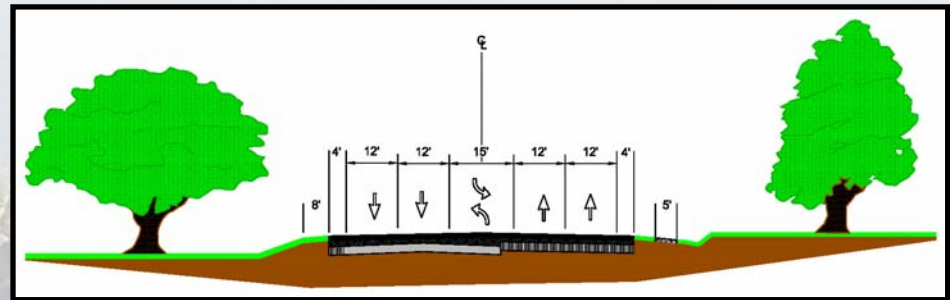
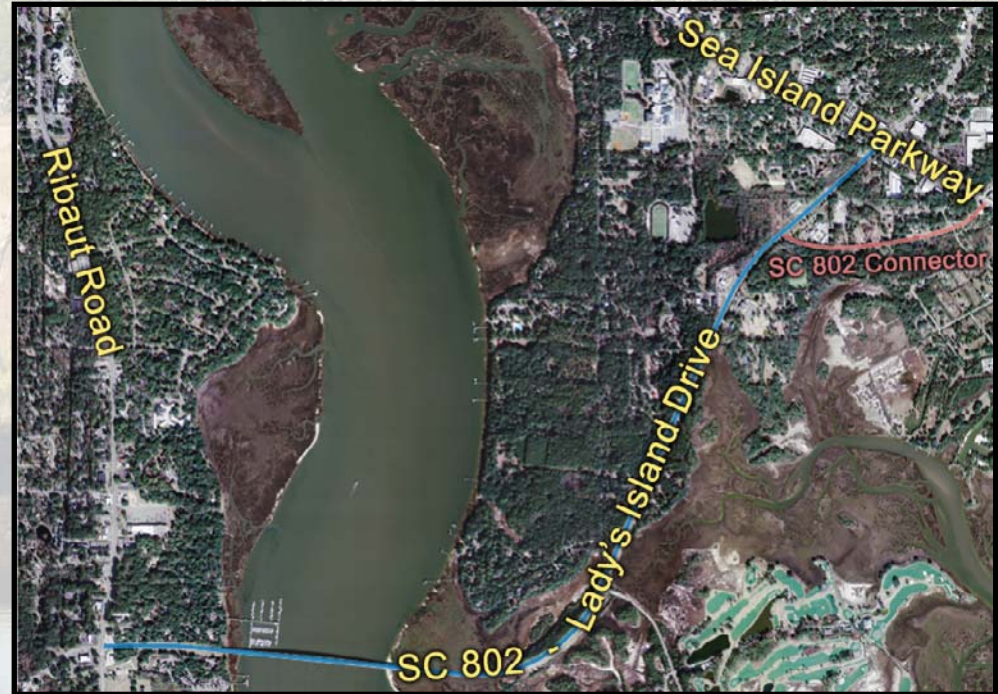
Collins Engineers, Inc.

## Project Status:

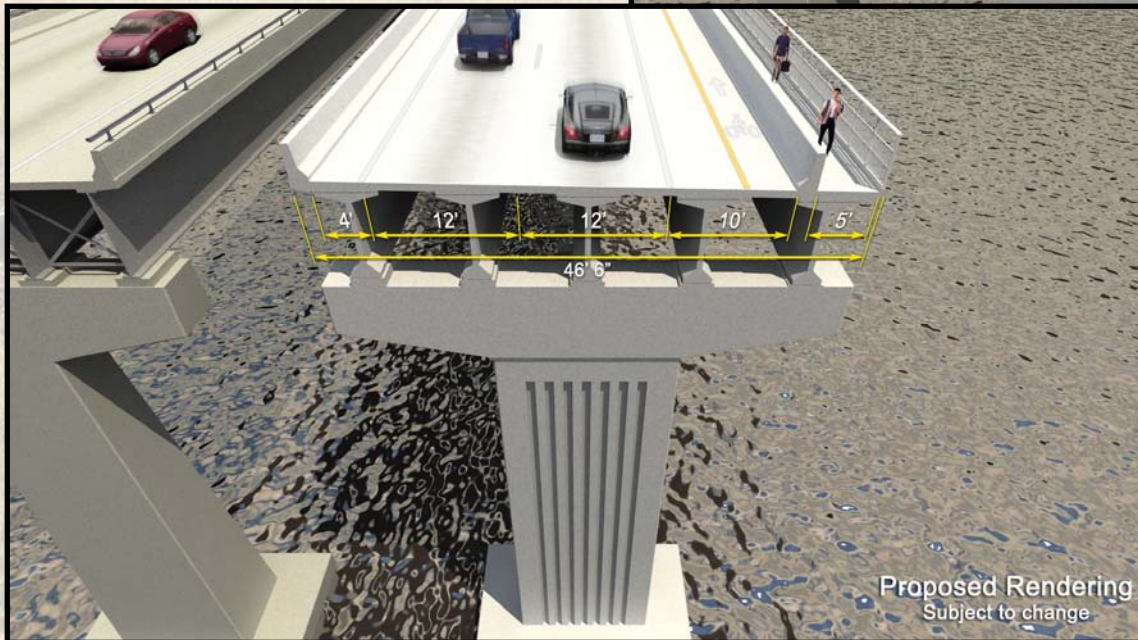
- Right-of-way acquisition complete
- Submitted final roadway plans for SCDOT review
- Advertise for road construction in 2008

## Project Funding:

County Roadway Sales Tax	\$35,500,000
Total	\$35,500,000
Expenditures to Date	\$1,764,039



# US 21/SC 802 (Lady's Island Drive) Widening



Renderings of the SC 802 Bridge